

SOLUGEL[®]
collagen peptides

**BONE
& JOINT
HEALTH**

The natural solution for
**STRONG BONES &
HEALTHY JOINTS**



PBLEINER
The Clear Solution

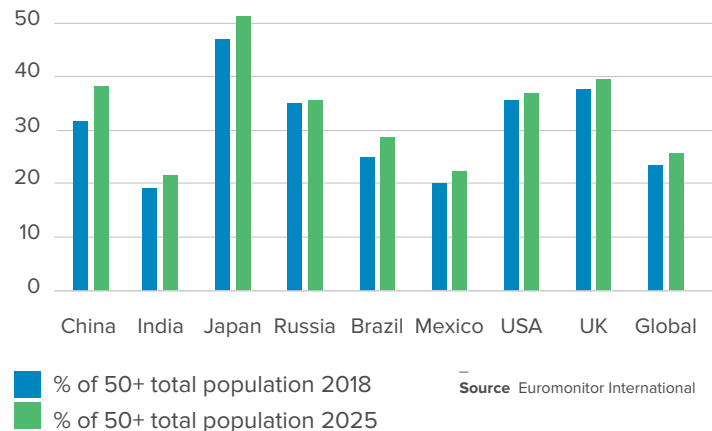
SOLUGEL® SUPPORTS HEALTHY AGING

Maintain high quality of life by sustaining mobility

For more than a century, life expectancy has continued increasing in many countries. People expect to live longer while remaining in good health and maintaining an active lifestyle. At the same time, the aging population is a rapidly-growing consumer segment and will grow even more in the future.⁽¹⁾

As a consequence of the growth in the aging population, countries around the world are witnessing an alarming rise in chronic issues, nearly half of which are bone and joint-related.⁽²⁾ In the course of its lifetime, the human body is continuously subjected to different “shocks and efforts”, which affect the supportive elements of the body, such as bones and joints. Balanced nutrition is essential to maintain a healthy body and ensure its proper functioning.

50+ years a rapidly-growing population segment 2018/2025



Collagen peptide, a natural and emerging ingredient for bone and joint health

Looking for more natural and comfortable ways to continue daily life activities is a global trend. Besides medical solutions with side effects in long-term therapy, consumers are turning to natural health supplements, as they offer greater health benefits.

One of the most well-known natural ingredients for bone and joint health is the collagen peptide, obtained from naturally-derived collagen. As the most abundant protein in mammals, collagen protein makes up about 30% of the body's protein.

By enzymatically breaking the collagen down into smaller peptides, collagen peptides are obtained. These bioactive peptides can be absorbed rapidly into the blood stream and act on the spot.

Collagen peptides help maintain strong bones and healthy joints.



SOLUGEL® FOR BONE HEALTH

Osteoporosis and bone metabolism

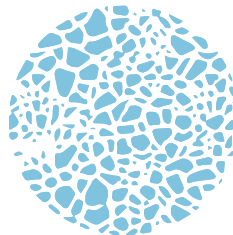
Osteoporosis is a condition of bone fragility with an increased susceptibility to fracture. It weakens bones and increases the risk of them breaking. Occurring mainly in elderly people and postmenopausal women, osteoporosis is the most common skeletal issue in the world and responsible for millions of bone fractures every year.

Bones form the supportive skeleton of our body and they are mainly composed of mineral matrix and organic matrix. Collagenous protein, mainly type I collagen, represents 85 to 90% of the organic matrix. Collagen is responsible for ductility, while the mineral matrix makes bones stiff. Alterations to collagen properties can therefore affect the mechanical properties of bones and increase fracture susceptibility.

Bones undergo constant remodeling throughout our life. This bone-remodeling process is aided by specific cells, namely osteoclasts for resorption and osteoblasts for bone formation.

The imbalance of bone remodeling could lead to osteopenia and eventually osteoporosis, characterized by a decrease in bone mass and density.

Osteoporosis and bone metabolism



Normal bone



Osteoporotic bone

Collagen peptides may strengthen your bones

A number of in vitro and in vivo studies suggest that orally-administered collagen peptides (10g during 24 weeks) may have beneficial effects on bone metabolism. Collagen peptides appear to stimulate osteoblast proliferation and expression of the gene for collagen production while inhibiting bone resorption by osteoclasts. The combination of these effects supports the maintenance and healthy function of the bones.^(3,4,5,6,7)

These studies suggest that collagen peptides may also have positive effects on bone mineral density for elderly people such as postmenopausal women⁽⁷⁾.

The combined intake of collagen peptide and calcium may also improve the bone formation of prepubertal children.⁽⁸⁾



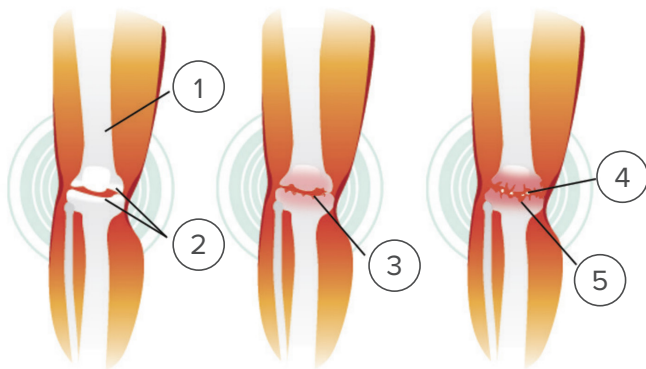
SOLUGEL® FOR JOINT HEALTH

Osteoarthritis and joint metabolism

Osteoarthritis (OA) is a joint inflammation resulting from cartilage degeneration. Osteoarthritis can be hereditary, or caused by aging, or a traumatic injury. Of those people with osteoarthritis, 80% suffer limited movement and as much as 20% cannot perform their daily activities.

A joint is the point where two or more bones are connected. In a healthy joint, the ends of the bones are encased in smooth cartilage to absorb the shock of movement and distribute the body's load.

Evolution of osteoarthritis



1. Bone
2. Cartilage
3. Thinned cartilage
4. Cartilage fragment
5. Destruction of cartilage

Joints are composed of chondrocytes (2-10%), living cells, and an extracellular matrix (ECM) maintained by the chondrocytes and this matrix consists of fluid (80%) and structural macromolecules like collagen (12%), proteoglycans (5-7%) and non-collagenous proteins (3-4%).

Chondrocytes have a central role in the metabolic processes characterized by a slow, continuous turnover of the ECM to maintain healthy cartilage. Our joints may undergo significant changes as we get older, practice sports or engage in day-to-day activities, all of which may affect cartilage turnover, ultimately leading to an imbalance between cartilage build-up and breakdown.

This can lead to chronic joint symptoms such as discomfort, stiffness, loss of flexibility and even swelling.

There is no known cure for osteoarthritis, therefore the objective of most treatments is pain reduction, increasing joint mobility, and preventing or limiting further damage.

Collagen peptides support healthy joints

Scientific research suggests that a daily oral intake of 10g collagen peptides may have positive effects on joints and help to maintain the healthy structure and function of joints.

A major impact is witnessed on activity-related pain after 4 to 6 months of supplementation.^(9,10,11)

In vitro studies report on the positive effect of orally administered type I collagen peptides with molecular weight distribution of 2-10 kDa on the extracellular matrix synthesis of collagen, proteoglycan and elastin by chondrocytes in cartilage⁽¹²⁾.

This results in positive effects on bone and joints integrity, helps to support healthy cartilage functions.



SOLUGEL[®] PERFORMS



	DOSAGE	DURATION	EFFECT	REFERENCE
Strong bones	5-10 g/day	6-12 months	Increase of: bone density bone strength	7, 13, 14
Healthy joints	10 g/day	4-6 months	Support of: joints comfort joint pain joint function	9, 10, 11, 13, 15



Collagen peptides help maintain strong bones and healthy joints

SOLUGEL® are high-quality collagen peptides. Scientific studies suggest that oral ingestion of collagen peptides helps maintain strong bones and healthy joints. See the references at the end of the document.

In bones, the activity of osteogenesis is stimulated by small collagen peptides while the bone resorption is reduced. This leads to beneficial effects such as increased bone-mineral density and bone strength. In joints, collagen peptides stimulate the extracellular matrix synthesis, thus rebalancing cartilage buildup and breakdown, helping to support the healthy structure and function of bone and joints.

SOLUGEL® is easily dissolved in water and it has a neutral odor and flavor. PB Leiner's bioactive SOLUGEL® collagen peptides are available with different functional properties and can be based on different raw materials, which include halal and kosher and pasture-raised certified materials. High-protein concentrations can be achieved with low viscosity, ideal for beverages, bars, confectionery and instant preparations.

SOLUGEL® adds value to your various applications, from food supplements to nutrient-rich foods and beverages.

Our technical experts know all about collagen peptides. Our objective is to spot and exploit opportunities for you by staying abreast of the latest scientific research and market trends.



References

- 1 Euromonitor International, (2019). Top 10 Global Consumer Trends for 2019
- 2 Dubourg,G.(2013).Targeting bone health. The world of food ingredients, February 2013.
- 3 Kim, H.K., Kim, M.G. and Leem, K.H. (2013). Osteogenic activity of collagen peptide via ERK/MAPK pathway mediated boosting of collagen synthesis and its therapeutic efficacy in osteoporotic bone by back-scattered electron imaging and microarchitecture analysis. *Molecules*, Vol. 18, 15474-15489.
- 4 Leem, K.H., Lee, S., Jang, A. and Kim, H.K. (2013). Porcine skin gelatin hydrolysate promotes longitudinal bone growth in adolescent rats. *Journal of Medicinal Food*, Vol. 16, Iss. 5, 447-453.
- 5 Kim, H.K., Kim, M.G. and Leem, K.H. (2014). Collagen hydrolysates increased osteogenic gene expressions via a MAPK signaling pathway in MG-63 human osteoblasts. *Food & Function*, Vol. 5, Iss. 3, 573-578.
- 6 JunLi Liu, Bing Zhang, ShuJun Song, Ming Ma, ShaoYan Si, YiHu Wang, BingXin Xu, Kai Feng, JiGong Wu and YanChuan Guo. (2014). Bovine collagen peptides compounds promote the proliferation and differentiation of MC3T3-E1 pre-osteoblasts, Vol.9, Iss. 6, 1-6.
- 7 Adam, M., Spacek, P., Hulejova, H., Galianova, A. and Blahos, J. (1996). Postmenopausal osteoporosis. Treatment with calcitonin and a diet rich in collagen peptides. *Casopis Lékaru Českých*, Vol. 135, Iss. 3, 74-78.
- 8 Martin-Bautista, E., Martín-Matillas, M., Martín-Lagos, J.A., Miranda-Leon, M.T., Muñoz-Torres, M., Ruiz-Requena, E., Rivero, M., Quer, J., Puigdueta, I., and Campoy, C. (2011). A nutritional intervention study with hydrolyzed collagen in pre-pubertal Spanish children: influence on bone modeling biomarkers. *Journal of Pediatric Endocrinology and Metabolism*, Vol. 24, Iss. 3-4,147-153.
- 9 Trč, T. and Bohmová, J. (2011). Efficacy and tolerance of enzymatic hydrolysed collagen (EHC) vs. glucosamine sulphate (GS) in the treatment of knee osteoarthritis (KOA). *International Orthopaedics*, Vol. 35, Iss. 3, 341-348.
- 10 Benito-Ruiz, P., Camacho-Zambrano, M.M., Carrillo-Arcatales, J.N., Mestanza-Peralta, M.A., Vallejo-Flores, C.A., Vargas-López, S.V., Villacís-Tamayo, R.A. and Zurita-Gavilanes, L.A. (2009). A randomized controlled trial on the efficacy and safety of a food ingredient, collagen hydrolysate, for improving joint comfort. *International Journal of Food Sciences and Nutrition*, Vol. 60, Iss. 1, 99-113.
- 11 Clark, K.L., Sebastianelli, W., Flechsenhar, K.R., Aukermann, D.F., Meza, F., Millard, R.L., Deitch, J.R., Sherbondy, P.S., and Albert, A. (2008). 24-Week study on the use of collagen hydrolysate as a dietary supplement in athletes with activity-related joint pain. *Current Medical Research and Opinions*, Vol. 24, Iss. 5, 1485-1496.
- 12 Schunck, M., Schulze, C.H. and Oesser, S. (2006). Disparate efficacy of collagen hydrolysate and glucosamine on the extracellular matrix metabolism of articular chondrocytes. *Osteoarthritis and Cartilage*, Vol. 14, Suppl. 114, 199
- 13 Porfirio, E., and Bernardes Fanaro, G. (2016). Collagen supplementation as a complementary therapy for the prevention and treatment of osteoporosis and osteoarthritis: a systematic review. *Rev. Bras. Geriatr. Gerontol.*, 19(1):153-164
- 14 König, D., Oesser, S., Scharla, S., Zdzieblik, D. and Gollhofer, A. (2018). Specific Collagen Peptides Improve Bone Mineral Density and Bone Markers in Postmenopausal Women—A Randomized Controlled Study. *Nutrients* 10, 97.
- 15 Kumar, S., Sugihara, F., Suzuki, K., Inoue, N. and Venkateswarathirukumar, S. (2014). A double-blind, placebo-controlled, randomised, clinical study on the effectiveness of collagen peptide on osteoarthritis. *J Sci Food Agric*.
- 16 Hartog, A., Cozijnsen, M., de Vrij, G. and Garssen, J. (2013). Collagen hydrolysate inhibits zymosan-induced inflammation. *Experimental Biology and Medicine*.

More information on scientific studies are available on request.

SOLUGEL®
collagen peptides

Brings elasticity, smoothness
and hydration to the skin



SOLUGEL®
collagen peptides

Helps maintain strong bones
and healthy joints



SOLUGEL®
collagen peptides

Offers a unique combination
of amino acids for sports and
active lifestyles



PB LEINER

The Clear Solution

EMEA & Africa

Marius Duchéstraat 260
1800 Vilvoorde - Belgium
+ 32 2 255 62 21

www.pbleiner.com - info@pbleiner.com



Part of Tessengerlo Group

LATAM & Oceania

Parque Industrial Sauce Viejo
Ruta 11 Km 455
(CP 3017) Sauce Viejo - Santa Fe
Argentina
+54 342 450 11 01

North America

7001 North Brady Street,
Davenport,
Iowa 52806 - USA
+1 563-386-8040

Asia

Room503, NO.329,
TianYao Qiao Road,
XuHui District, Shanghai,
China,
+ 86 21 64360106

2019, PB Leiner- Part of Tessengerlo Group - All Rights Reserved. The content and information contained in this brochure may not be reproduced, redistributed or translated in any form without prior written permission of PB Leiner. This brochure is intended for professionals and is not intended to diagnose, treat, cure, or prevent any disease. The content and information in this brochure is intended to report about scientific research that has been performed [and published by independent researchers] on the SOLUGEL® product. The results of these studies [are published in peer reviewed scientific journals and] are presented for information purposes only. They cannot be considered as endorsement of any product's properties nor as health claims under the EU or US laws and regulations. The uses and claims for SOLUGEL® recommended in this brochure should be adapted to the current applicable local regulatory requirements. This brochure has not been evaluated by the FDA or EFSA.